



# Central Park-ING

Ehab Abdel-Naby & Chris  
Blanco

Fall 2015

Parking+ Studio: Professor

Diversifying the types of housing available by adding affordable housing apartments to a location that primarily has larger houses for 1 or 2 families. All while allowing for a healthier environment friendly green space. In these communal spaces, people from different diversities can mingle and interact with one another. A number of different spaces are allocated to diverse businesses and markets from different parts of the world. Our goal was to allow for a flourishing in social interaction.

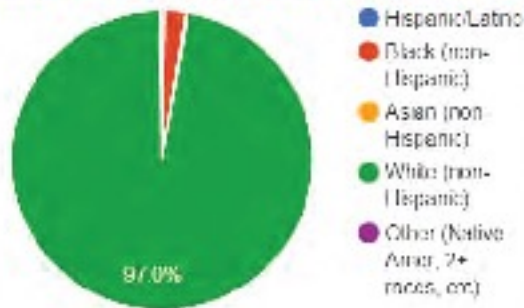
# Central Park- ING

Ehab Abdel-Naby & Chris Blanco

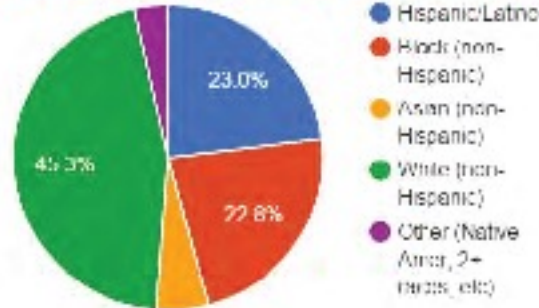


# HOW CAN WE USE ARCHITECTURE TO FURTHER THE DIVERSIFICATION OF A CITY THAT WAS PRIMARILY DOMINATED BY ONE GROUP OF PEOPLE OVER THE PAST 40 YEARS?

Race / Hispanic ethnicity in Census Tract 4138 in 1970



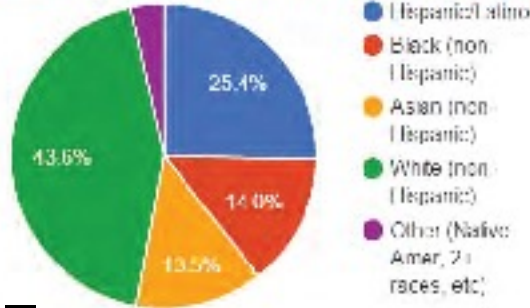
Race / Hispanic ethnicity in Census Tract 4138 in 2010



Race / Hispanic ethnicity in Census Tract 4105 in 1970



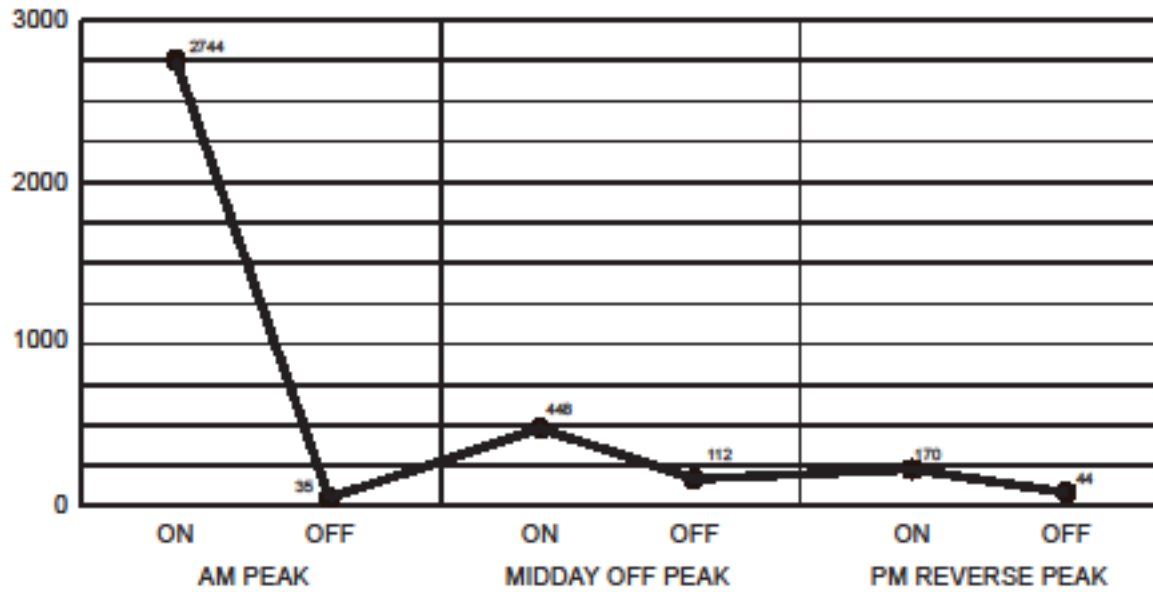
Race / Hispanic ethnicity in Census Tract 4105 in 2010



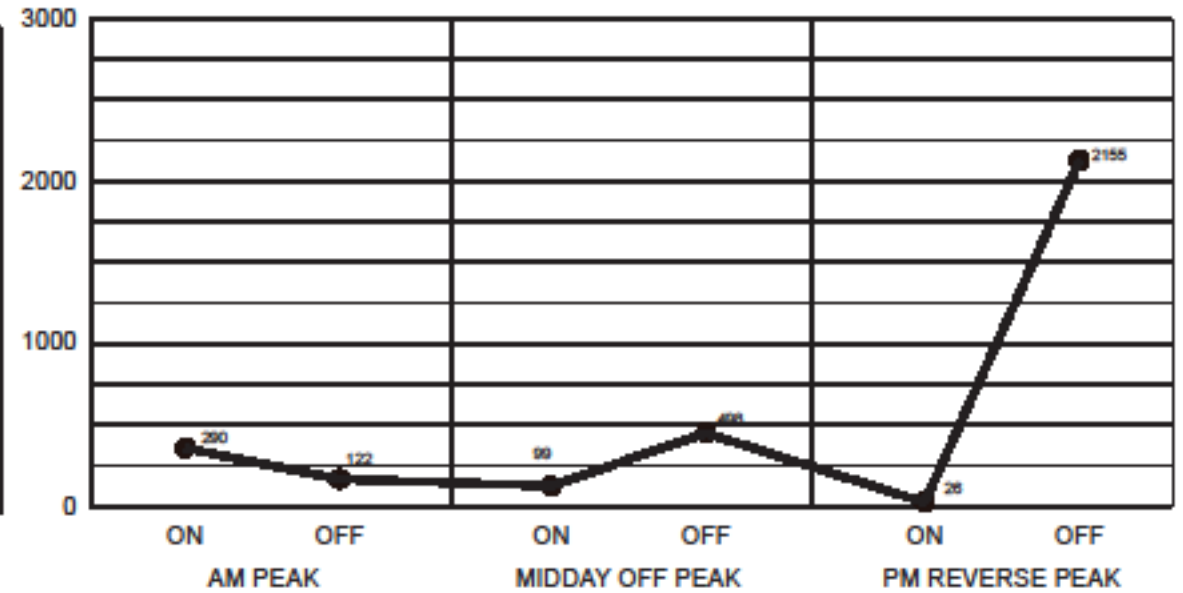
# Central Park- ING

Ehab Abdel-Naby & Chris Blanco

WESTBOUND TRAIN

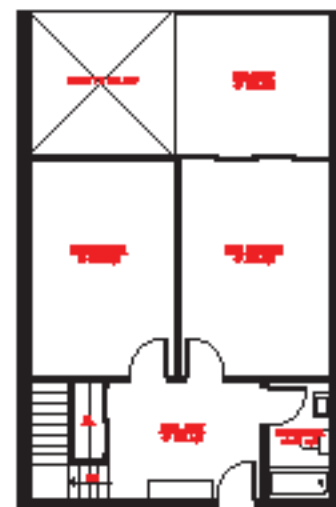
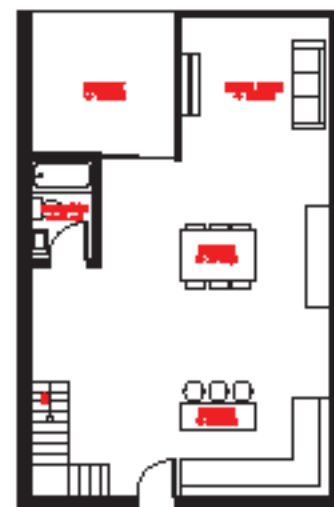
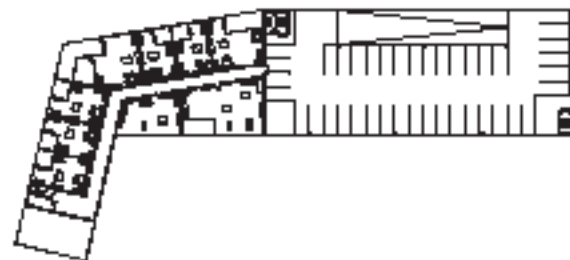
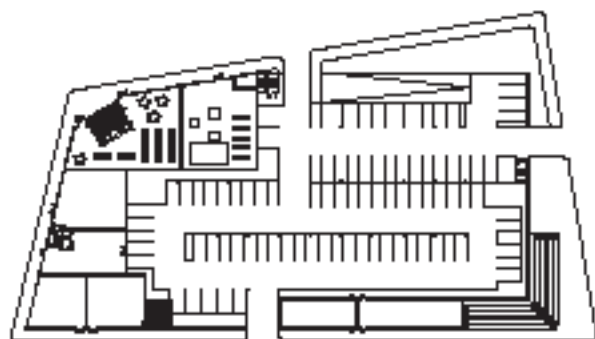
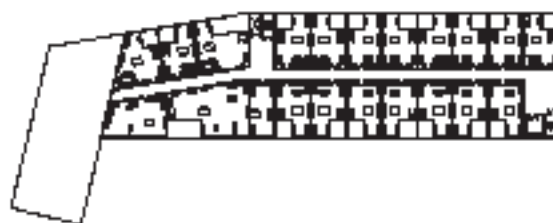
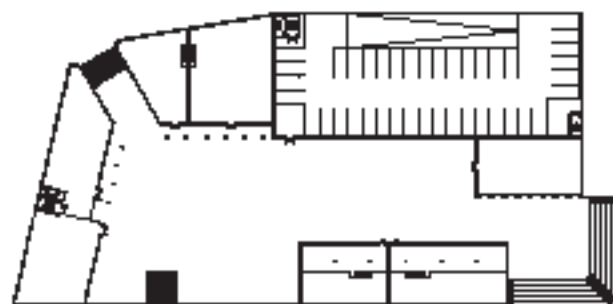
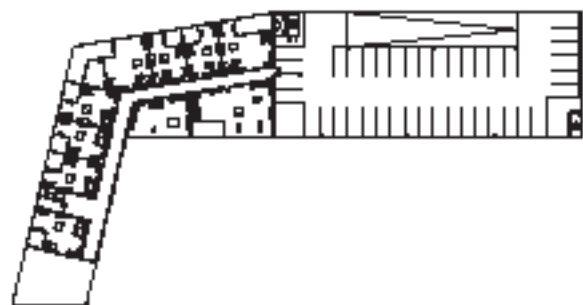


EASTBOUND TRAIN



# Central Park- ING

Ehab Abdel-Naby & Chris Blanco

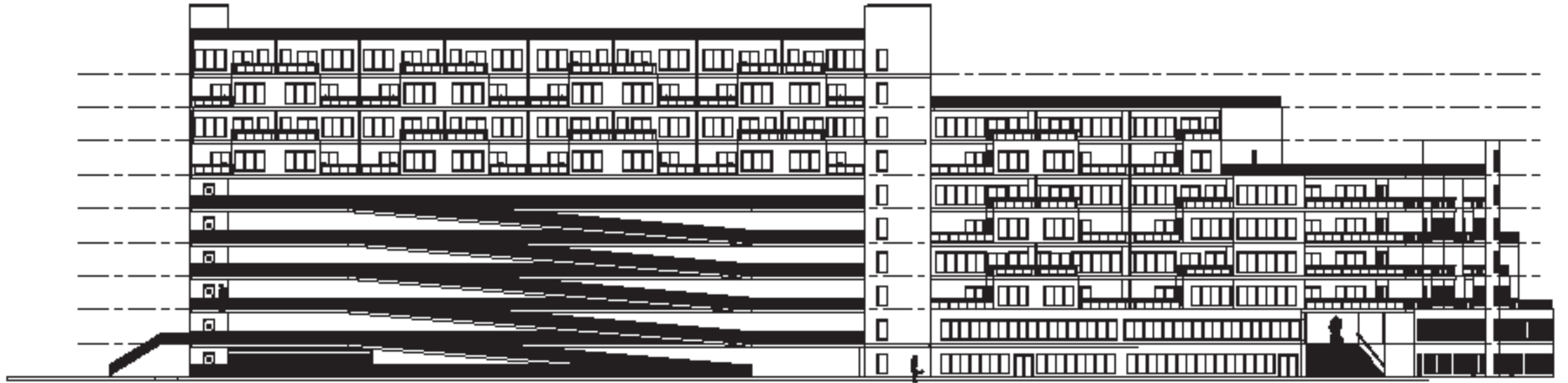




Section 2  
9.90' x 4.4'



Section 1



① Mark  
1/8" = 1'-0"

# Central Park- ING

Ehab Abdel-Naby & Chris Blanco

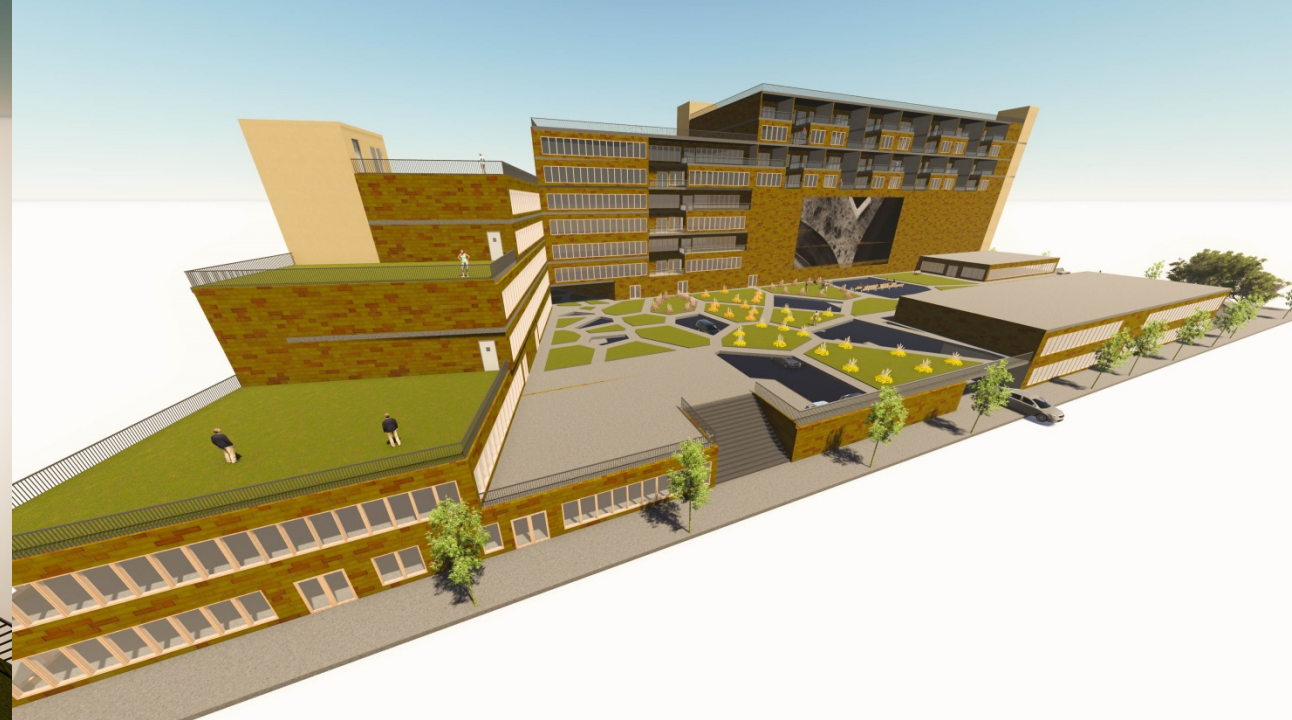
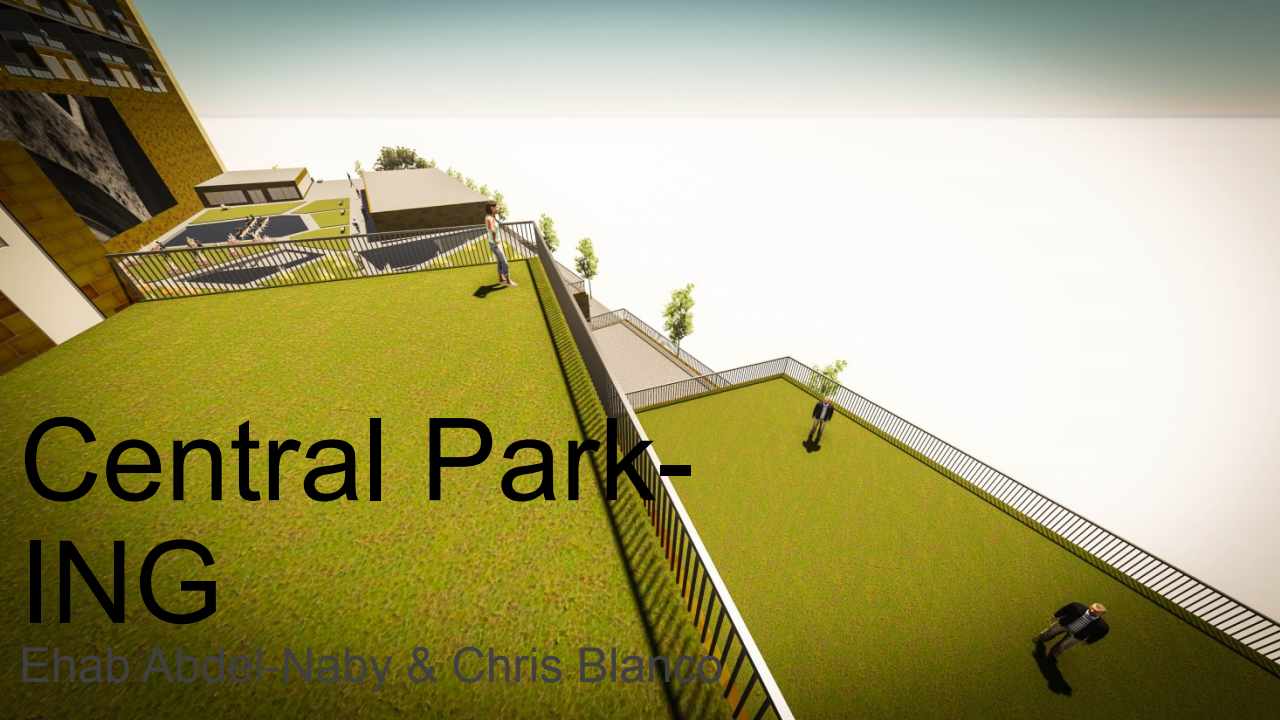
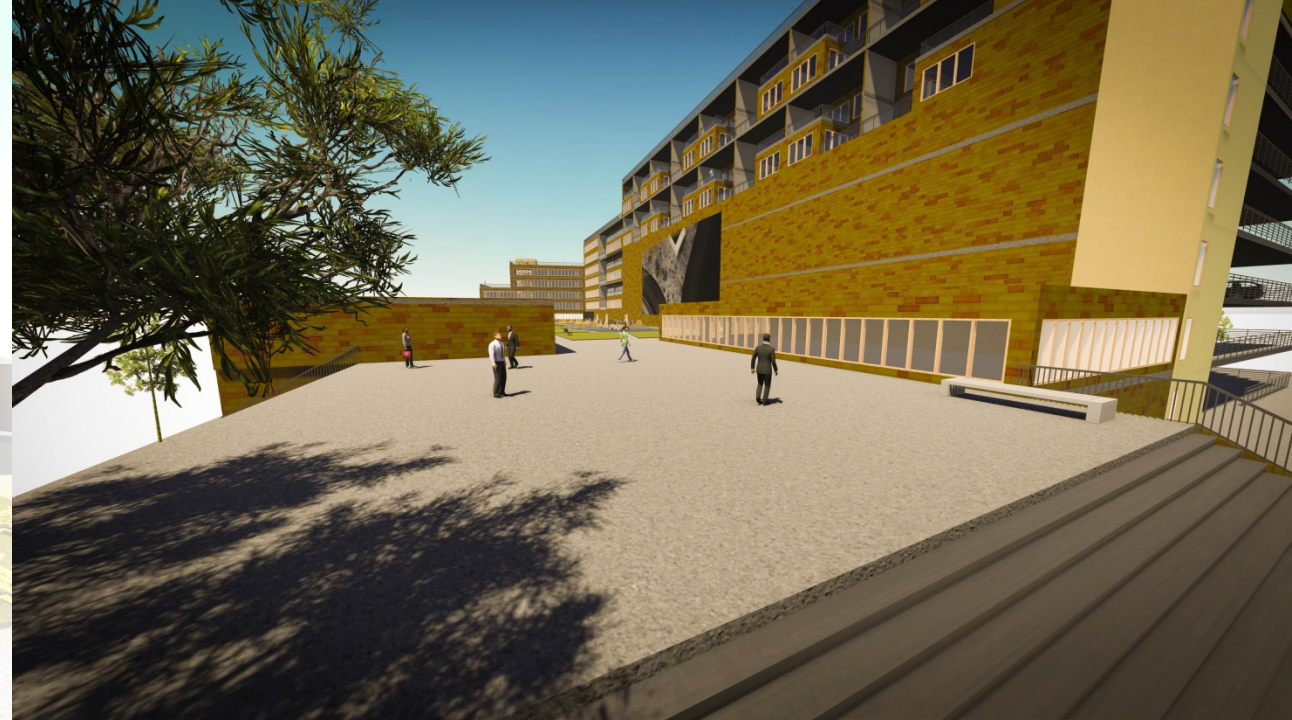
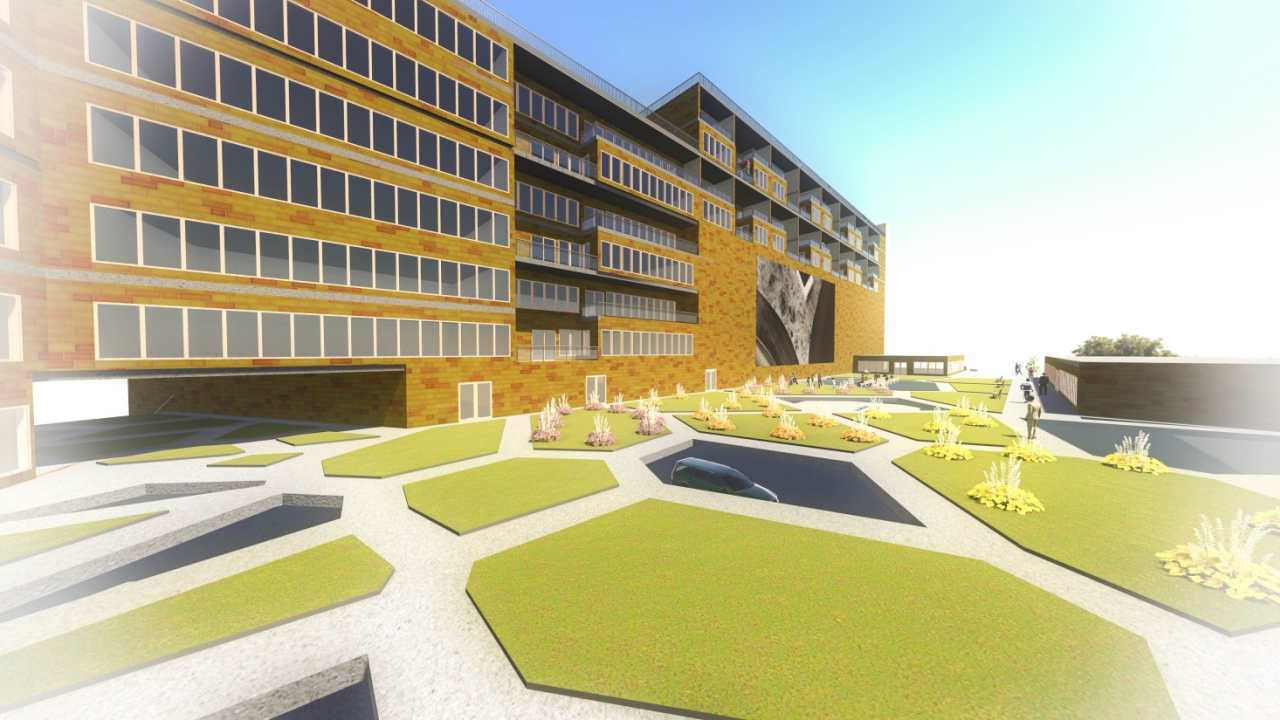




# Central Park- ING

Ehab Abdel-Naby & Chris Blanco





# Central Park- ING

Ehab Abdel-Naby & Chris Blanco





# Central Park- ING

Ehab Abdel-Naby & Chris Blanco